

# Intelligence

# Auto Pilot System

# SAS-70

**NMEA 2000 Interface**  
Multi Talker-Multi Listener



**SAS-70** Auto Pilot is a multiple display enables diffused navigation data to integrate and also adequate for yacht and small boat by using wire/wireless remote.

**NEW**



# Intelligence Auto Pilot System

# SAS-70+SM-975

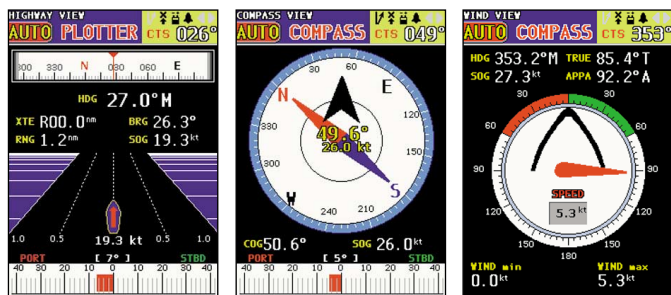
## Features

- ◆ High contrast 5.6" colour TFT LCD
- ◆ NMEA 2000 interface / Multi Talker-Multi Listener
- ◆ Various navigation data displays in one screen and it improves the concentration of auto steering
- ◆ Wide range of applications is easily available by data line sharing (Water Depth/Temperature/Vessel Speed, Fuel Gage, Wind Direction/Speed Unit and so on.)
- ◆ Simply to connect existing Auto Pilot System
- ◆ Available on auto navigation interfacing with GPS Plotter

## Specifications

• Display	5.6" color TFT LCD
• Power	+24VDC
• Power Consumption	Max. within 85W
• Heading Angle Resolution	0.5° (Electronic Compass)
• Direction Setting Resolution	1°
• Temperature	-15°C ~ +55°C

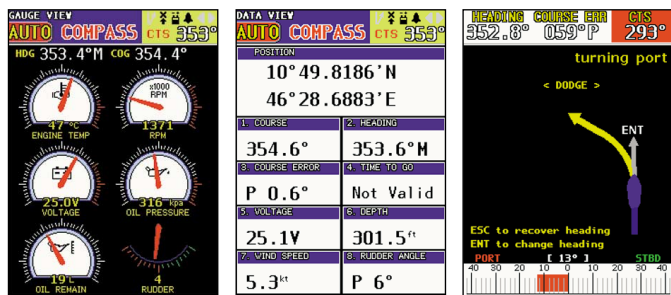
## Display Type



▲ High-Way

▲ Compass

▲ Wind



▲ Analog Gauge

▲ Data

▲ Dodge

## Components

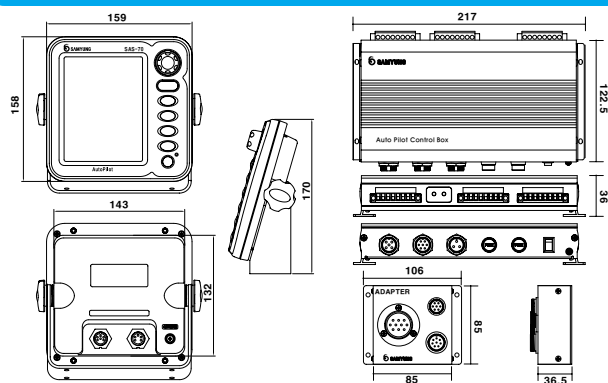
### ■ Standard

- SAS-70
  - Display unit(SAS-70)
  - Control unit(SAS-70C)
  - Remote connecting unit(SAS-70A)
  - Electronic compass(ES-95)
  - Angle sensor(FS-80A)
  - Solenoid(SV-20L)
  - Wire remote controller(RC-10A)
- SM-975
  - Electronic lever (SM-975)
  - Wire remote (RC-30)
  - Angle Indicator(FM-80B)

### ■ Optional

- Cylinder, Oil, Hose
- GPS plotter
- Various sensor(Water Depth/Temperature/Vessel Speed, Fuel Gage, Wind Direction/Speed)

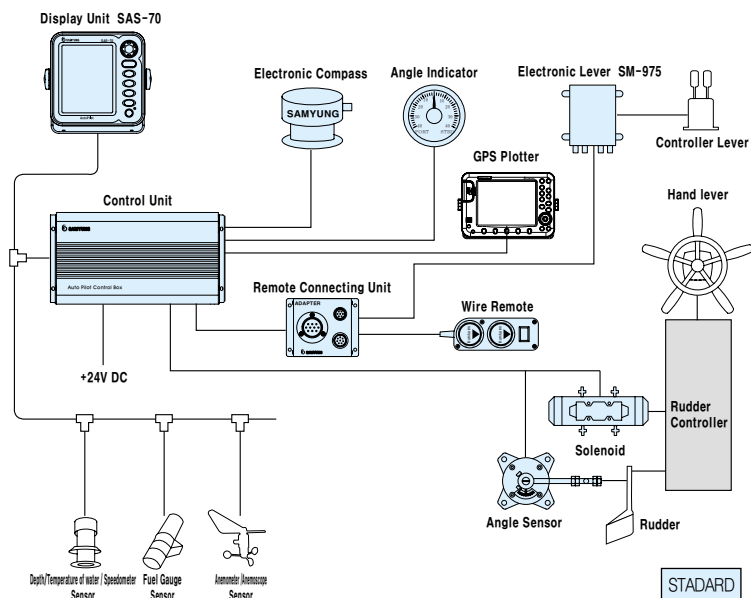
## Dimensions



▲ Display Unit

▲ Control / Remote connecting Unit

## Configuration



\* Specification is subject to change without pre-notice

 **SAMYUNG ENC Co.,Ltd.**

Head Office : 1123-17, Dongsam-Dong, Youngdo-Gu, Busan, Korea, 606-083  
 Tel : 82-51-601-5530(Rep.) Fax : 82-51-413-4446  
 A/S Center : 65-20, 2-Ga Namhang-Dong, Yungdo-Gu, Busan, Korea, 606-032  
 Tel : 82-51-601-5570~4(Rep.) Fax : 82-51-416-5515  
 Http : //www.samyungenc.com



ISO 9001:2000 / KS A 9001:2001  
 Certificate No. : RQM0645

